

SPEC SHEET + MEASUREMENTS



Eddie Bauer® Woodland Shirt Jac. EB228

Product photo



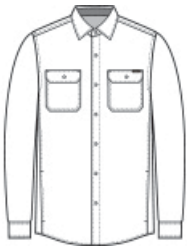
Whether you're spending time inside or outside in cool temps, the high-pile fleece interior of this rugged-looking shirt jac will keep you warm.

- 10.3-ounce, 100% polyester microfleece bonded with 100% polyester high-pile fleece interior
- 100% polyester woven details
- Eddie Bauer logo snap-front closure and snap-close chest pockets
- Handwarmer pockets
- Eddie Bauer woven label at left chest pocket

CARE INSTRUCTIONS

Machine Wash Cold With Like Colors. Do Not Use Fabric Softener. Only Non-Chlorine Bleach When Needed. Tumble Dry Low. Cool Iron If Necessary.

Sketches



front



back

SPEC SHEET + MEASUREMENTS



Eddie Bauer® Woodland Shirt Jac. EB228

PRODUCT MEASUREMENTS

	XS	S	M	L	XL	2XL	3XL	4XL
Body Length at Back	29	30	31	32	33	34	34 1/2	35
Chest	20	21 1/2	23	24 1/2	26	27 1/2	29 1/2	31 1/2
Sleeve Length from Center Back	34 3/4	35 1/2	36 1/4	37	37 3/4	38 1/2	39 1/4	40

Body Length at Back: Measured from high point shoulder to finished hem at back.

Chest: Measured across the chest one inch below armhole when laid flat.

Sleeve Length from Center Back: Measure from Center Back neck to shoulder point to sleeve hem.

SIZE CHARTS

	XS	S	M	L	XL	2XL	3XL	4XL
Chest	32-34	35-37	38-40	41-43	44-46	48-50	52-54	55-57

SPEC SHEET + MEASUREMENTS



Eddie Bauer® Woodland Shirt Jac. EB228

HOW TO MEASURE



CHEST

Measure under the arm and around the fullest part of the chest with arms down, keeping tape horizontal.

COLORS



Grey Steel/
Bone



Radish/ Black